

PR619**LADIES' CONTRAST COOLCHECKER POLO**

CARTON	PACK	NO. SKU'S
36	6	48

**Fabric**

100% Polyester Pique, 155gsm

Colours

Black/ Lime, Black/Red, Black/ Turquoise, Dark Grey/ Silver, Royal/ White, Black/Orange. Black/Sunflower, Red/ Black

Sizes

S, M, L, XL, 2XL, 3XL

Features

- Two contrast tipped polo
- Side panels for a fitted shape
- Three button placket
- Ribbed knit collar and cuffs
- Side vents
- Coolchecker wicking fabric

Country of Origin

China

Carton Dimensions

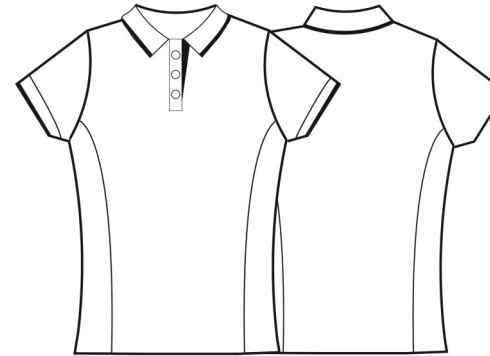
60 cm x 40cm x 38cm

Carton Weight

13 kg approx.

VAT Code

6105 20 1000



Colour	Pantone	C	M	Y	K
Black	0	0	0	0	100
Lime	2766	100	87	0	34
Red	200	0	100	65	15
Turquoise	312	89	0	11	0
Dark Grey	424	30	20	19	60
Silver	428c	0	0	0	23
Royal	286	100	60	0	6
White	White	0	0	0	0
Orange	1655	0	65	87	0
Sunflower	136c	0	27	79	0

Size	XS	S	M	L	XL	2XL
Bust to fit"	30	34	38	42	46	50
Bust to fit cm	76	86	96	106	116	126
Bust actual cm	88	94	100	106	114	122
DE,NL	32	36	40	44	48	52
FR,ES,PT	32	36	40	44	48	52
IT	36	40	44	48	52	56

Marketing Description

A smart choice for businesses looking for workwear that reflects company branding, these polo shirts offer a two-tone contrast colouring. The ribbed knit collar and cuffs is colour tipped as is the neckband and placket. There is a three button fastening on the placket for a casual unbuttoned look or smart fastened up style. The Coolchecker fabric is designed to draw moisture away from the body and encourage air flow, so the wearer remains fresh and cool throughout the day. Side panels create an aesthetically pleasing fitted style for women.



WASH DARK COLOURS SEPARATELY, WASH INSIDE OUT, DO NOT SOAK, IRON ON REVERSE